

Client: NOVERA COMPOUNDS LLC
 procurement@noveracompounds

 Sample received: **02/09/26**
 Analysis conducted: **02/13/26**

| | | | |
|--------------|--------------------------|----------|----------------|
| Compound: | Semaglutide | CAS: | 910463-68-2 |
| Batch/Lot #: | 395520 | Formula: | C187H291N45O59 |
| Appearance: | White lyophilized powder | Mol Wt: | 4113.641 g/mol |

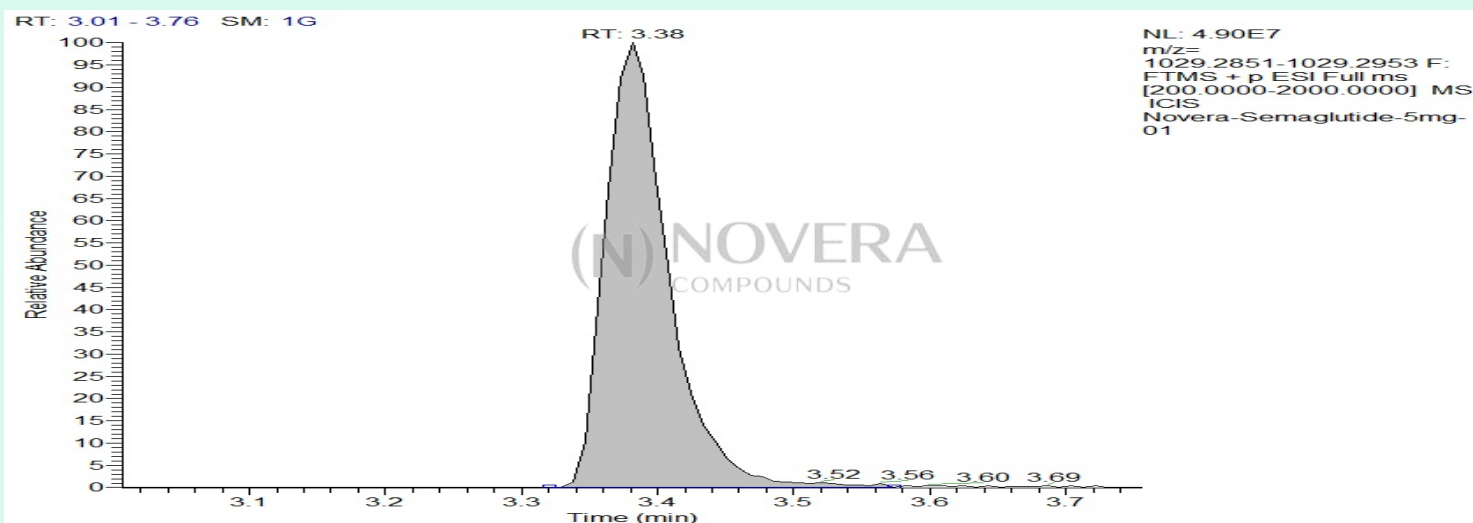
Method: Qualitative and Quantitative chemical analysis by Ultra High Performance Liquid Chromatography with Mass Spectrometry

Pubchem CID: 56843331

Semaglutide | C187H291N45O59 | CID 56843331

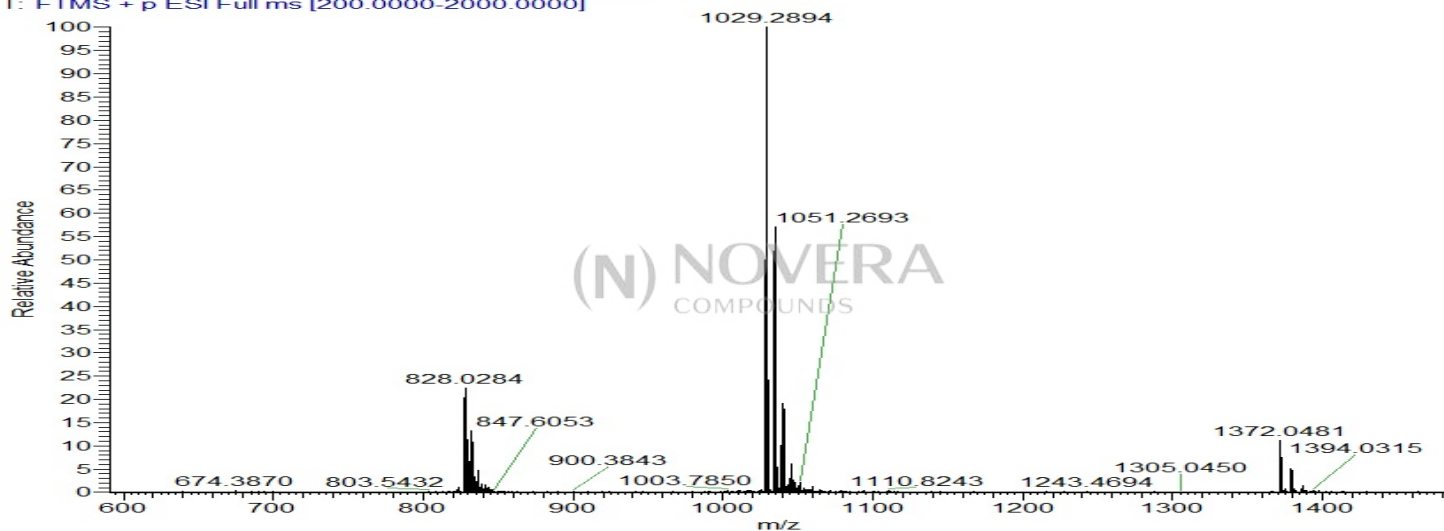
| | Specification | Result | |
|----------------|---------------|--------------------|------------------------|
| Identity Test: | Semaglutide | Semaglutide | Conforms |
| Quantity: | 5 mg | 6.8 mg | Over-Conforming |
| Purity: | >99% | 99.73% | Conforms |

LC-MS Chromatogram: Retention Time and Peak Analysis

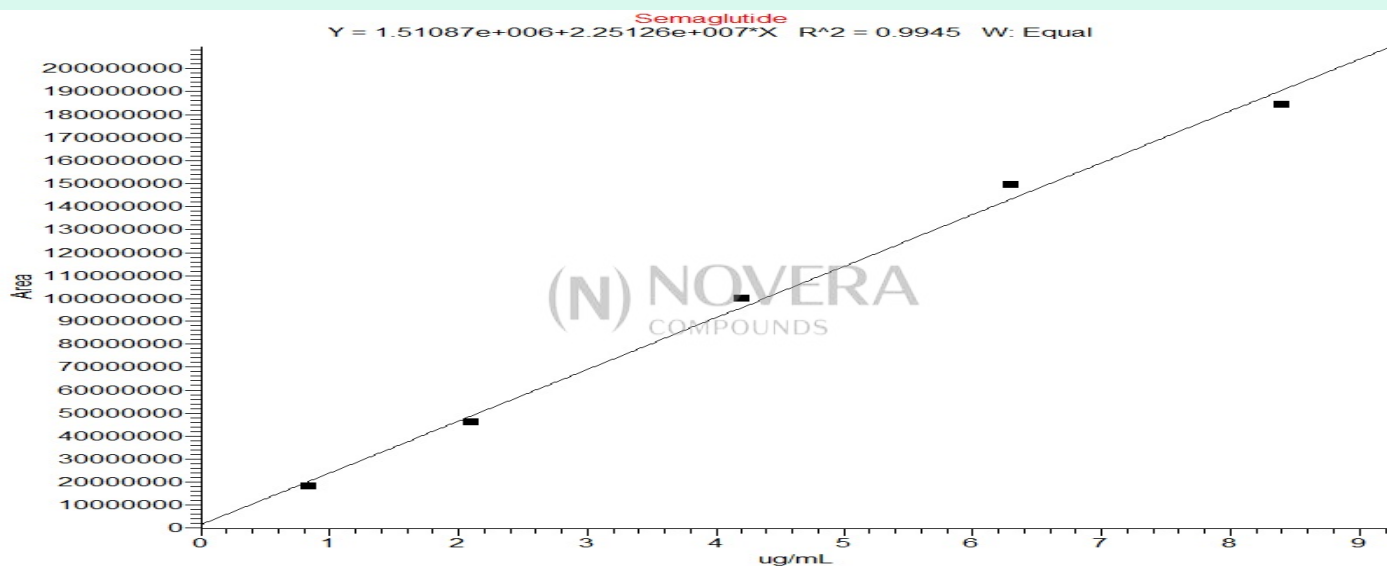


Full Scan Mass Spectrometry Analysis

Novera-Semaglutide-5mg-01 #388 RT: 3.38 AV: 1 NL: 4.85E7
T: FTMS + p ESI Full ms [200.0000-2000.0000]



Calibration Curve



Analysis Performed by

Dr. Roberto Marin
Analytical Chemist
contact@bioregen.com

COA #12222
Security Key **NOVCOMP01**
bioregen.com/verify

Roberto Marin

